

Courses & distances down

* Say S 67 E 18

ten mile Creek

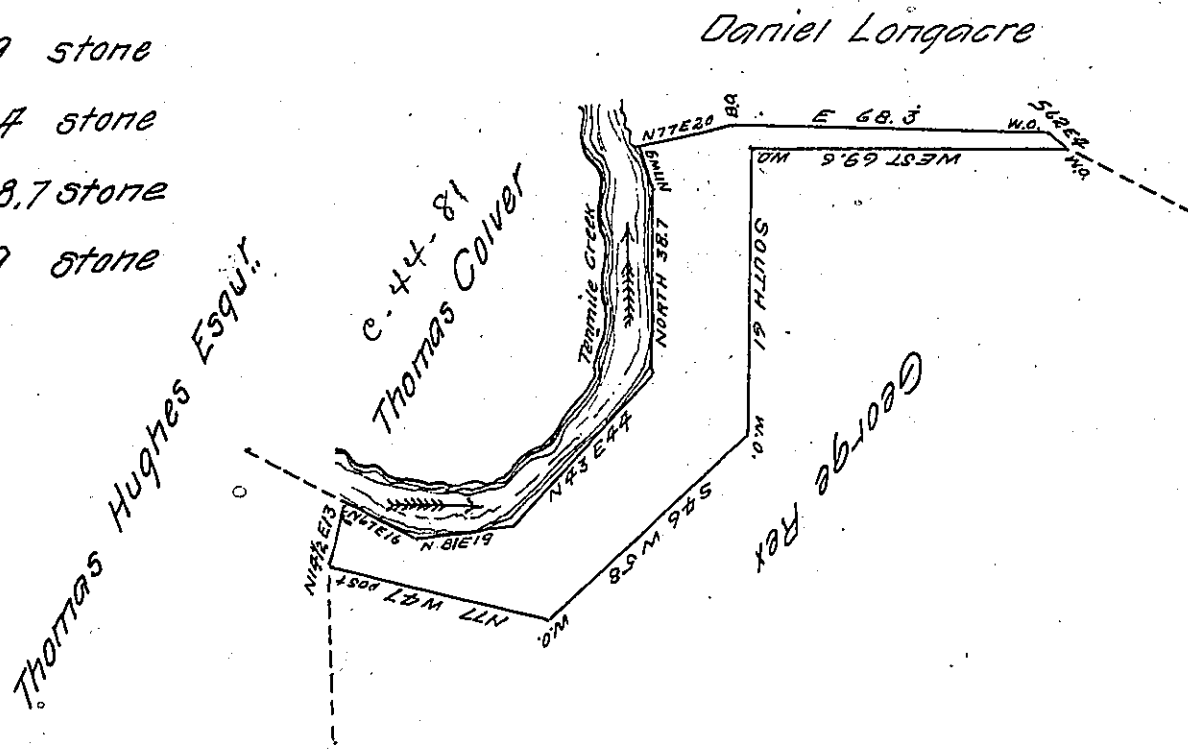
* S 67 E 18 stone

N 81 E 19 stone

N 43 E 44 stone

North 38.7 stone

N 17 W 9 stone



The above is a draught of a survey made ^{December} 24th 1817 in
 pursuance of a warrant granted James Hughes bearing date the
 17th of April 1817 containing 16 acres and 40 perches and allow-
 -ance of 6 per cent situate on ten mile Creek in Jefferson town-
 -ship ~~Township~~ Greene County Surveyed by
 To Richard T Leech Esq. J. G. } John Forayce D. S.

IN TESTIMONY that the above is a copy of the original remaining on file in
 the Department of Internal Affairs of Pennsylvania, made
 conformably to an Act of Assembly approved the 16th day of
 February, 1833, I have hereunto set my Hand and caused
 the Seal of said Department to be affixed at Harrisburg,
 this twentieth day of April 1905

James B. Brown
 Secretary of Internal Affairs.